

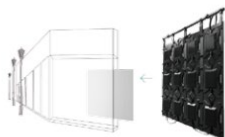


## all-in-one | VSS series

VSS series all-in-one led screen is an intelligent, modular LED screen without cabinet and the PCB with led, receiving card, drive, power compact integration; The product is extremely light and thin. Simple installation and maintenance, stability, waterproof, cluster management and mobile phone screen control and other outstanding advantages. After you download the smart APP, you can use mobile devices such as mobile phones and tablets for control. It is the best display equipment for retail, media, rental, car and other fields. .

### Small Space Placement

Ultra light and thin, 1.65kg, 36mm. Easy to fit in all kinds of small, special location space



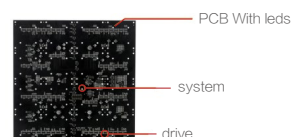
### Plug-and-Play

Modular Design, Signal and power cable all in one, plug and play; Quick and easy



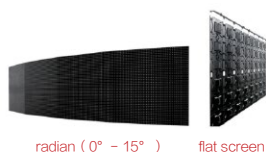
### Intelligent Integration

Receiving card, PCB, drive and power supply all in one; Mobile phone control screen, cluster release



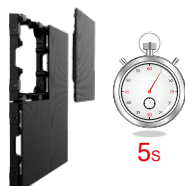
### DIY, Arc Assembled

Artistic modeling is more diverse, more novel visual experience



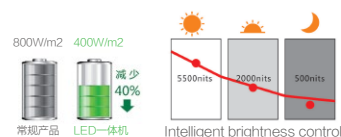
### Easy Maintenance

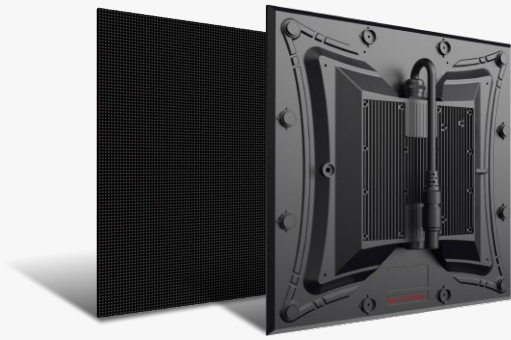
Easy to maintain by hand, 5 seconds disassembly



### Intelligent Power Consumption Management

Save electricity, no need air-conditioning





### Cabinet size

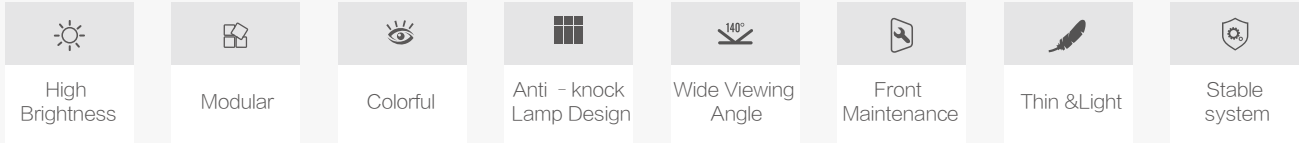
VSS: 320 x 320 x 37mm

### Application scenario

Shop, commercial exhibitions, vehicle-mounted etc

### VSS Series

- Application : Outdoor
- Refresh Rate : 3840Hz
- Material : PC
- Brightness : 1500 ~ 6000cd/m<sup>2</sup>
- Installation : Hanging/Fixed
- Certificate : FCC / CFR



Model	VSS4-O
Pixel Pitch(mm)	4
LED Configuration	SMD1921
Pixel Density (dot/m <sup>2</sup> )	62500
Module Size(mm)	320 x 320 x36
Module Resolution(dot)	80 x 80
Cabinet Weight(/Panel)	1.65kg
IP Rating	IP67
Brightness(CD/m <sup>2</sup> )	5000
Viewing Angle	140° / 140°
Viewing Distance	> 4m
Gray Scale	14 bit
Max.Power Consumption(W/m <sup>2</sup> )	800
Ave.Power Consumption(W/m <sup>2</sup> )	200
Refresh Rate(Hz)	≥3840
Scan Mode	16S
Input Voltage	AC100 ~ 240V, 50 / 60 Hz
Control mode	Synchronous display with control PC by DVI
Support signal input type	Composite, S-Vido, Component, VGA, DVI, HDMI, HD_SDI
Temperature	-30° C ~ 55° C (work) , - 30° C ~ 55° C (store)
Humidity	35% ~ 85% (work) , 10% ~ 90% (store)
Operating Life	≥75, 000hours