

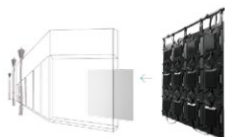


## all-in-one | VSS series

VSS series all-in-one led screen is an intelligent, modular LED screen without cabinet and the PCB with led, receiving card, drive, power compact integration; The product is extremely light and thin. Simple installation and maintenance, stability, waterproof, cluster management and mobile phone screen control and other outstanding advantages. After you download the smart APP, you can use mobile devices such as mobile phones and tablets for control. It is the best display equipment for retail, media, rental, car and other fields. .

### Small Space Placement

Ultra light and thin, 1.65kg, 36mm. Easy to fit in all kinds of small, special location space



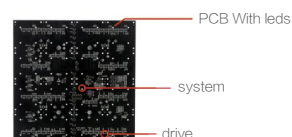
### Plug-and-Play

Modular Design, Signal and power cable all in one. plug and play; Quick and easy



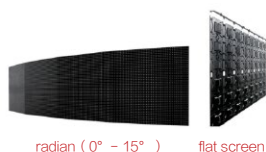
### Intelligent Integration

Receiving card, PCB, drive and power supply all in one; Mobile phone control screen, cluster release



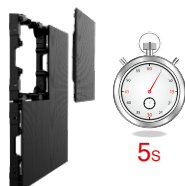
### DIY, Arc Assembled

Artistic modeling is more diverse, more novel visual experience



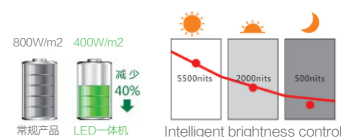
### Easy Maintenance

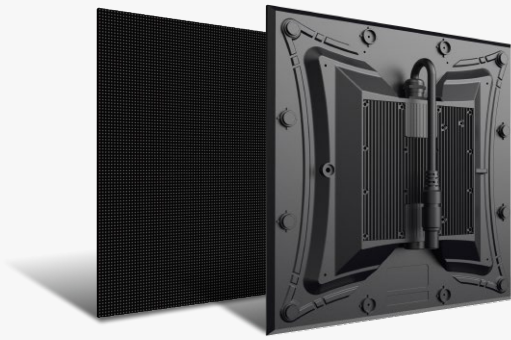
Easy to maintain by hand, 5 seconds disassembly



### Intelligent Power Consumption Management

Save electricity, no need air-conditioning





### Cabinet size


VSS: 320 x 320 x 36mm  
320 x 320 x 37mm

### Application scenario

Shop, commercial exhibitions,  
vehicle-mounted etc

### VSS Series

- Application : · Indoor /Outdoor
- Refresh Rate : 3840Hz
- Material : PC
- Brightness : 1500 ~ 6000cd/m<sup>2</sup>
- Installation : Hanging/Fixed
- Certificate : FCC / CFR

							
High Brightness	Modular	Colorful	Anti - knock Lamp Design	Wide Viewing Angle	Front Maintenance	Thin &Light	Stable system

Model	VSS4-O	VSS6-O	VSS-2	VSS-4
Pixel Pitch(mm)	4	6	2.85	4
LED Configuration	SMD1921	SMD2727	SMD1515	SMD2020
Pixel Density (dot/m <sup>2</sup> )	62500	22500	122500	62500
Module Size(mm)	320 x 320 x36	320 x 320 x36	320 x 320 x37	320 x 320 x37
Module Resolution(dot)	80 x 80	48 x 48	112 x 112	80 x 80
Cabinet Weight(/Panel)	1.65kg	1.65kg	1.6kg	1.6kg
IP Rating	IP67	IP67	IP40	IP40
Brightness(CD/m <sup>2</sup> )	5000	5000	800	800
Viewing Angle	140° / 140°	140° / 140°	140° / 140°	140° / 140°
Viewing Distance	>4m	>6m	>3m	>6m
Gray Scale	14 bit	14 bit	14 bit	14 bit
Max.Power Consumption(W/m <sup>2</sup> )	800	800	600	600
Ave.Power Consumption(W/m <sup>2</sup> )	200	200	150	150
Refresh Rate(Hz)	≥3840	≥3840	≥3840	≥3840
Scan Mode	16S	6S	16S	16S
Input Voltage	AC100 ~ 240V, 50 / 60 Hz			
Control mode	Synchronous display with control PC by DVI			
Support signal input type	Composite, S-Vido, Component, VGA, DVI, HDMI, HD_SDI			
Temperature	-30° C ~ 55° C (work) , - 30° C ~ 55° C (store)			
Humidity	35% ~ 85% (work) , 10% ~ 90% (store)			
Operating Life	≥75, 000hours			